

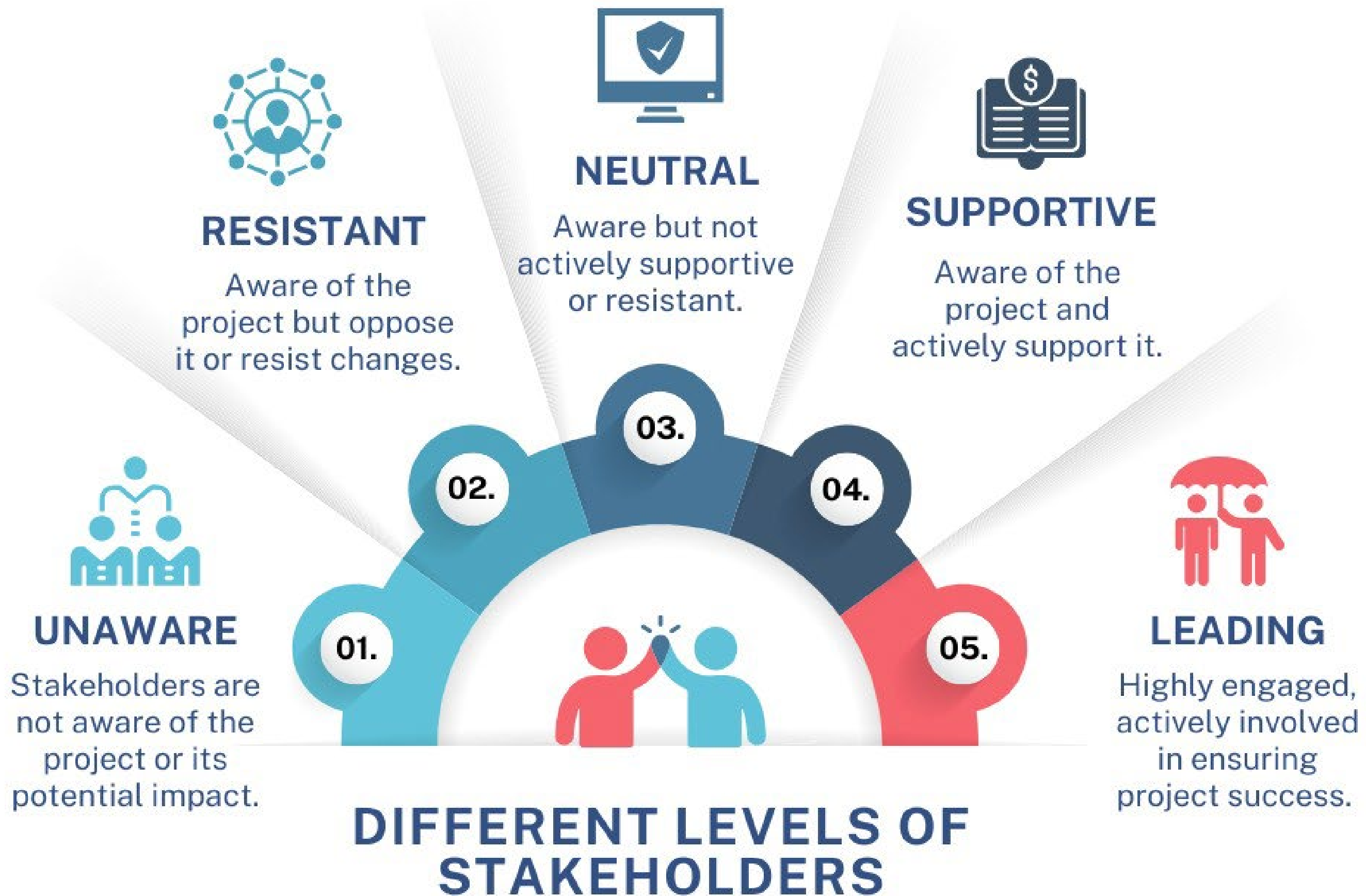


**21ST CENTURY
LEADERSHIP
INSTITUTE**

**ENGAGING
STAKEHOLDERS IN THE
LEGISLATIVE PROCESS**

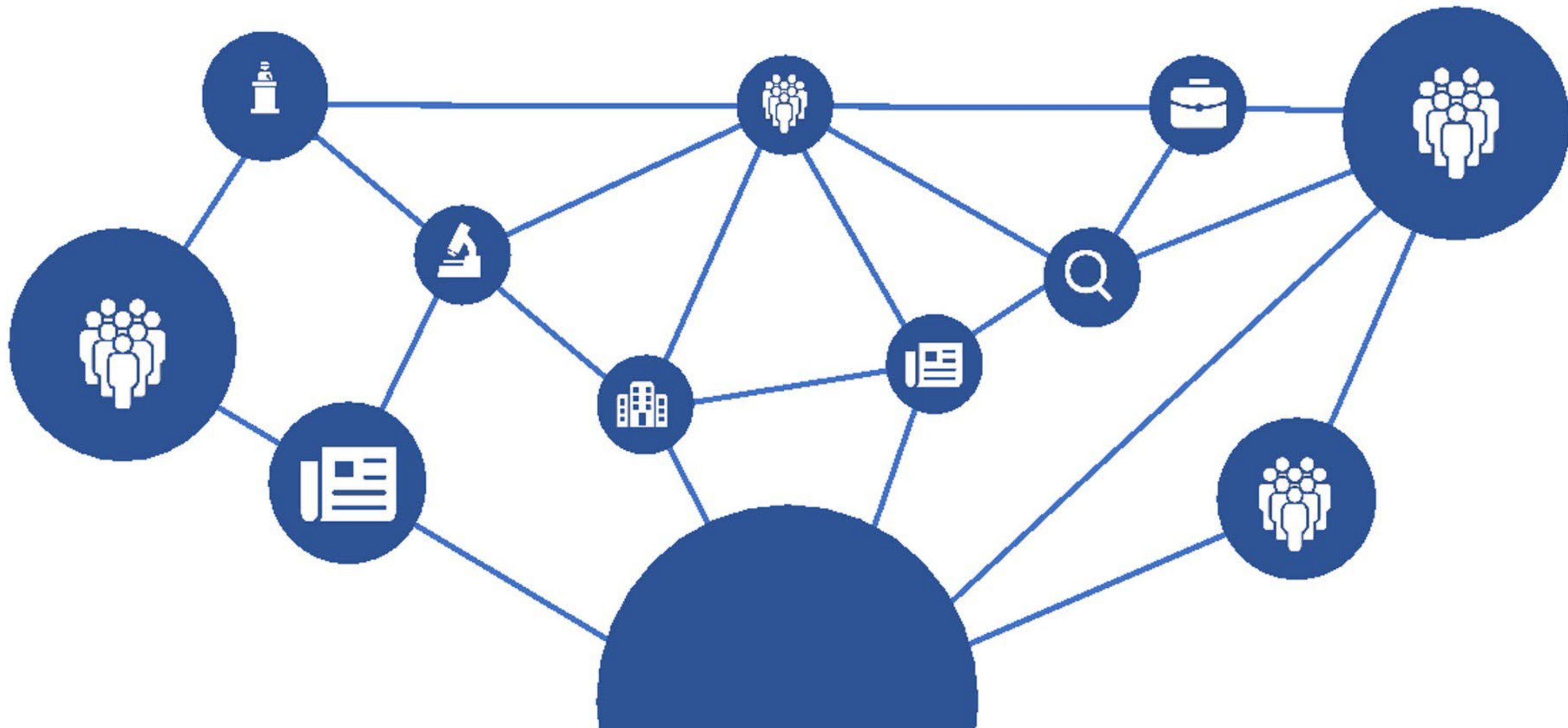
HOW DO YOU DEFINE STAKEHOLDER?



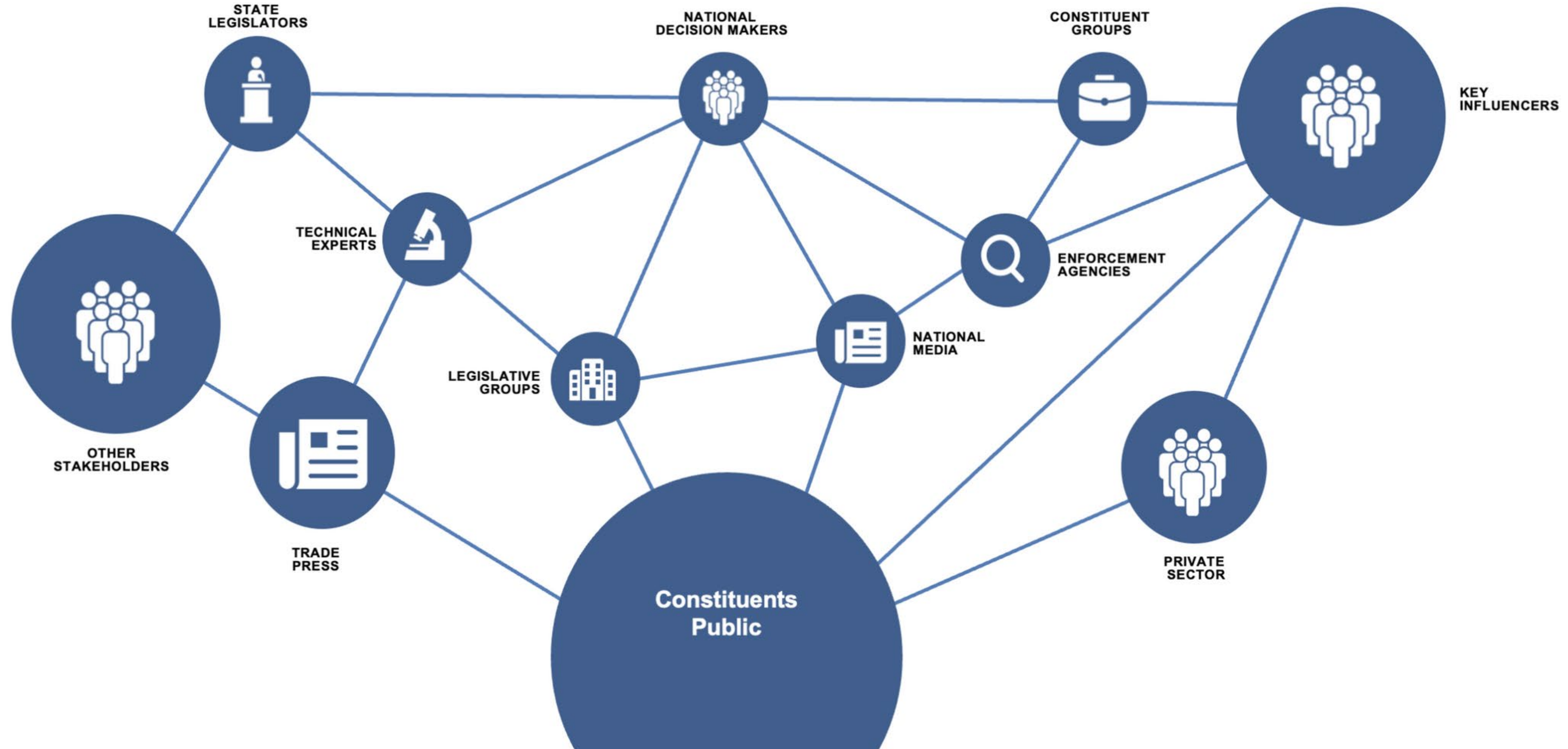


Stakeholder Management: Network of Influence

Key trends in today's environment have disrupted traditional top-down hierarchies. Success in this "network era" demands that your organization master these networks, inspiring and engaging in a campaign influencing a spectrum of audiences, rather than traditional coalition and stakeholder approaches.



Stakeholder Management: Network of Influence





CONTACT US

21st Century Leadership Institute



615.788.4690



hello@cicelysimpson.com



<https://cicelysimpson.com>



Washington, DC

Nashville

Miami

Los Angeles